



14 January 2014

Rondo Micro Sprinkler – Head Assembly

Introduction:

The Rondo Micro Sprinkler head consists of 3 parts: bridge, nozzle and spinner.

Generally the heads are sold assembled, but they can also be ordered in parts for local assembly.

Guidelines for local assembly:

We have set out the following guidelines to help facilities interested in local assembly of Rondo Micro Sprinkler heads:

- Appoint a person to be in charge of the assembly process and the quality control procedures.
- Allocate a suitable storage area for Rondo parts, where the parts will be protected from dirt or damage.
- Mark the different parts clearly to prevent any mix-up.
- Rivulis Plastro Quality Control will notify all facilities about any changes in Rondo micro sprinkler production that may affect the assembly process.
- Assemble heads manually. If necessary, other possibilities will be considered in the future.
- To avoid any errors, place only relevant nozzles and spinners on the assembling table during work.
- It is highly recommended that the assembly work be assigned to permanent workers trained and authorized by the employee in charge of the assembly process.
- Each facility is responsible for the products assembled locally.

Quality control instructions:

- Prior to any assembling process, compare the order and the parts to be assembled to ensure you have the parts you need.
- Inspect the assembling process at least once a day. To ensure correct assembly, check that...
 - The spinner turns smoothly.
 - The bridge is mounted as it should.
 - There is no damage to the nozzle inlet, the spinner pin and the range limiter.

After inspection, pack the assembled heads and mark the packages properly.

[Rondo and Rondo RFR Mini Sprinklers Orders from: www.irrigationglobal.com](http://www.irrigationglobal.com)

Existing Rondo Micro Sprinkler heads



Head with 3/8" threaded nozzle (regular or flow regulated)



Head with 5mm threaded nozzle



Head with conic female nozzle

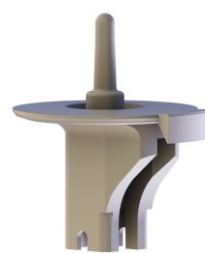
Rondo Micro Sprinkler parts



Bridge



Spinner



Spinner w/integral range limiter



3/8" threaded nozzle



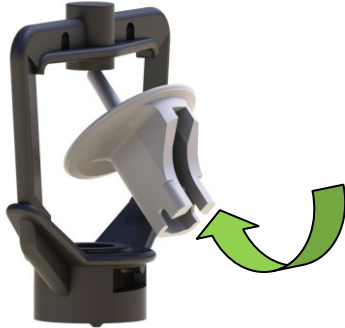
Ultra 5mm threaded nozzle



Ultra Conic nozzle

Assembly step-by-step

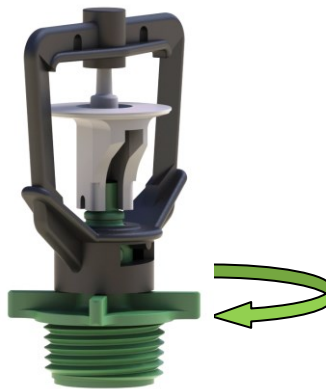
1. Place the spinner axle into the bridge and hold the spinner.



2. Hold the bridge over the nozzle with the bridge wings parallel to the nozzle bayonets.

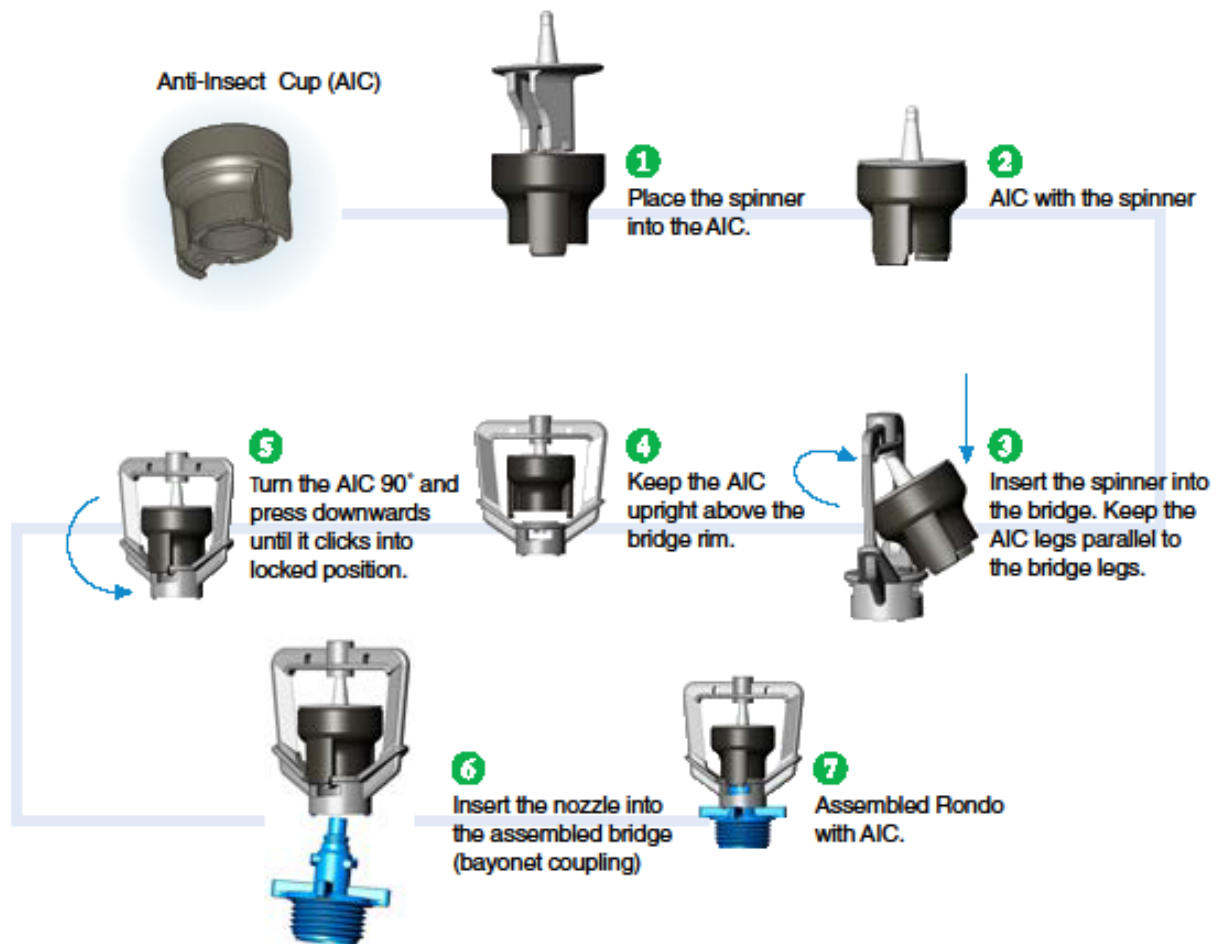
3. Mount the bridge on the nozzle. Make sure that the lower side of the spinner goes onto the nozzle.

4. Turn the bridge 90° clockwise until it clicks.



Anti-Insect Cup (AIC)

Assembling Instructions



For disassembling, follow the same steps inversely.