

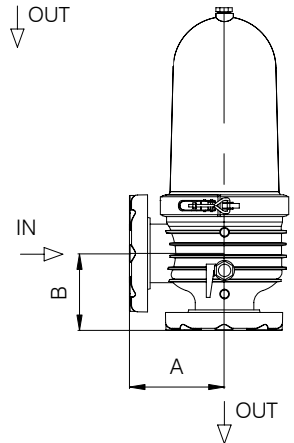
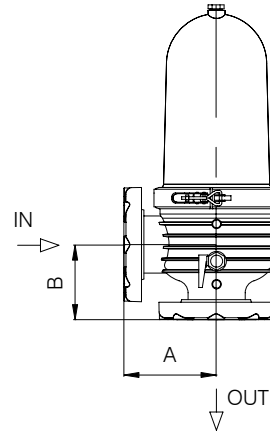
Arkal 4" Angle Filter

Catalog No. 1400 1 _ _ _ VICTAULIC CONNECTION
1400 7 _ _ _ 4"ARKAL FLANGE (ASA, BSTD, DIN)



Technical Data

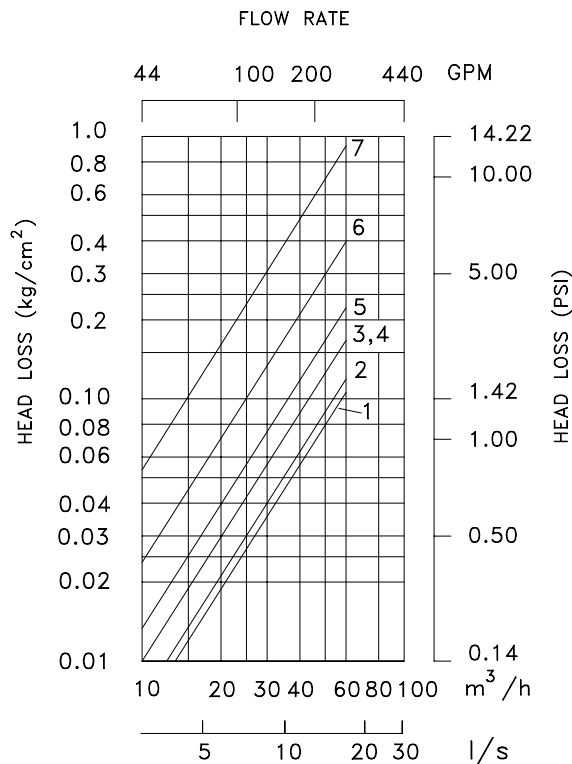
Inlet / outlet diam.	110 mm / 4"	4"
End connections (optional)	4" Arkal flange	4" Arkal flange
	4" Victaulic	4" Victaulic
Maximum pressure	10 Bar	140 psi
Maximum flow rate	60 m ³ /h	265 gpm
General filtration area	1852 cm ²	287 in ²
Filtration volume	1774 cm ³	108 in ³
Length of filter	636 mm	25 1/32"
Width of filter	250 mm	9 27/32"
Distance between end connections (A)	146 mm	5 3/4"
Distance between end connections (B)	187 mm	7 3/8"
Outer diam. Of filter element	170 mm	6 11/16"
Length Of filter element	347 mm	13 21/32"
Weight - victaulic connection	10.6 kg	23.3 lbs.
Weight with plastic flanges	12.6 kg	27.7 lbs.
Maximum temperature	70° C	158° F



Filtration Grades

- Off-white (800 micron / 18 mesh)
- Blue (400 micron / 40 mesh)
- Yellow (200 micron / 80 mesh)
- Red (130 micron / 120 mesh)
- Black (100 micron / 140 mesh)
- Green (55 micron)
- Grey (20 micron)

Head Loss Chart



Dismantling (for cleaning)

1. Release pressure and open drain tap.
2. Open cover clamp by lifting clamp lever.
3. Pull cover from body.
4. Remove filter element.
5. Open spine tightening nut.
6. Pull cap's telescopic extension to spread the discs.
7. Rinse with high pressure water jet.
8. To replace filter discs, dismantle spine by releasing inside clamps of spine cap.

Assembly

1. Close spine tightening nut until discs are tightly compressed.
2. Place filter element back in place.
3. Place filter cover on filter body.
4. Secure clamp on cover and close by the lever.

Installation

1. The 4" **ANGLE** filter may be installed horizontally or vertically.
2. A shut off valve should be installed at the filter inlet in order to close water supply for servicing.
3. A small tap with a flexible hose should be connected in front of the shut off valve for manual cleaning of the filter element.

Part List

No.	Cat. No.	Description	Materials
1.	2501 0300	Filter cover	R.PA
2.	5005 0004	Hydraulic seal	EPDM
3.	5042 0040	Clamp	S.S
4.	2506 0302	3"-4" Spine tightening nut	PP
5.	2506 0304	3"-4" Spine cap	PP
6.	2033 2_ _ _	Disc set	PP
7.	5003 2220	O-ring 2-220	EPDM
8.	2502 0302	3"-4" Spine 99	PP
9.	5003 2354	2-354 O-ring	EPDM
10.	5054 0212	½" x ¼" Tap	BRASS
11.	2511 0103	Gauge port nut	R.PP
12.	5006 0004	Gauge port seal	EPDM
13.	2140 2_ _ _	3"-4" Filter element 99	
	2199 0043	3"-4" Spine 99 (w/o disc set)	R.PA
14.	2242 1001	4" body complex victaulic ends	
14.1	2242 7000	4" body complex with flanges	
15.	5019 0112	½" Plug	
16.	2253 0425	4" Arkal flange	
16.1	2510 0425	4" Ring flange	R.PA
16.2	2507 0402	Cone flange	POM
16.3	5005 2014	4" Gasket	EPDM

Materials

R.PP- REINFORCED POLYPROPYLENE
 R.PA - REINFORCED POLYAMIDE
 S.S- STAINLESS STEEL
 PP- POLYPROPYLENE
 POM- POLYOXYMETHYLENE

