

Hydrodrip Flat Dripline Orders:  
[www.irrigationglobal.com](http://www.irrigationglobal.com)

# Hydrodrip Drip Tape



## Product Features USA units

Flat dripper  
Turbulent flow path

## Applications

Row crop, field crops and vegetables  
Subsurface

## Product Options

Diameter options: 5/8", 7/8"  
Wall thickness options: 10, 12, 15 mil

## Operating Guidelines

Recommended operating pressure: 8-15 PSI

Maximum operating pressure:

5/8"/10 or 12 mil: 19 psi

5/8"/15 mil: 22 psi

7/8"/10 or 12 mil: 15 psi

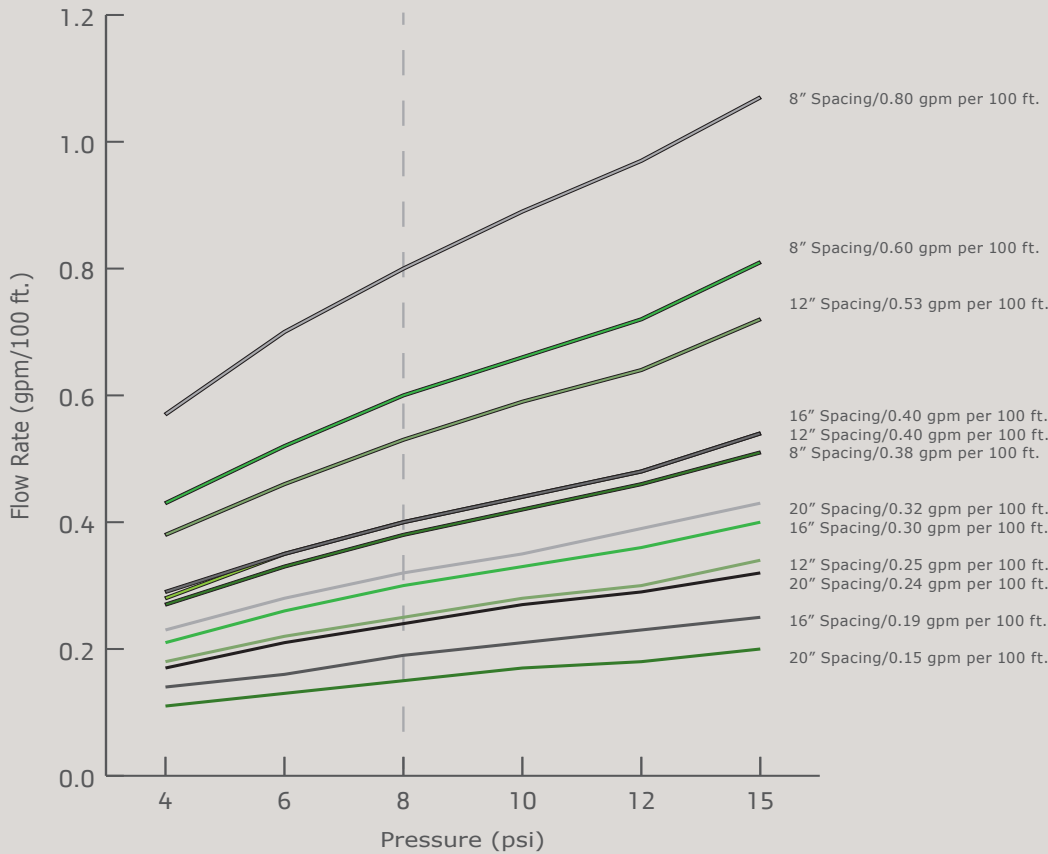
7/8"/15 mil: 17 psi

Filtration requirement: 80 micron/150 mesh

Hydrodrip Drip Tape is the ideal drip tape solution for crops requiring the combination of wide dripper spacing, low flow rates and excellent uniformity in long run lengths. The dripper is engineered with a highly effective filter inlet system and a turbulent flow path, reducing the chance of plugging and helping to maintain peak performance. And with its flap outlet, Hydrodrip Drip tape reduces the ingestion of soil on system shut-down when used in a subsurface application.

# Hydrodrip Drip Tape

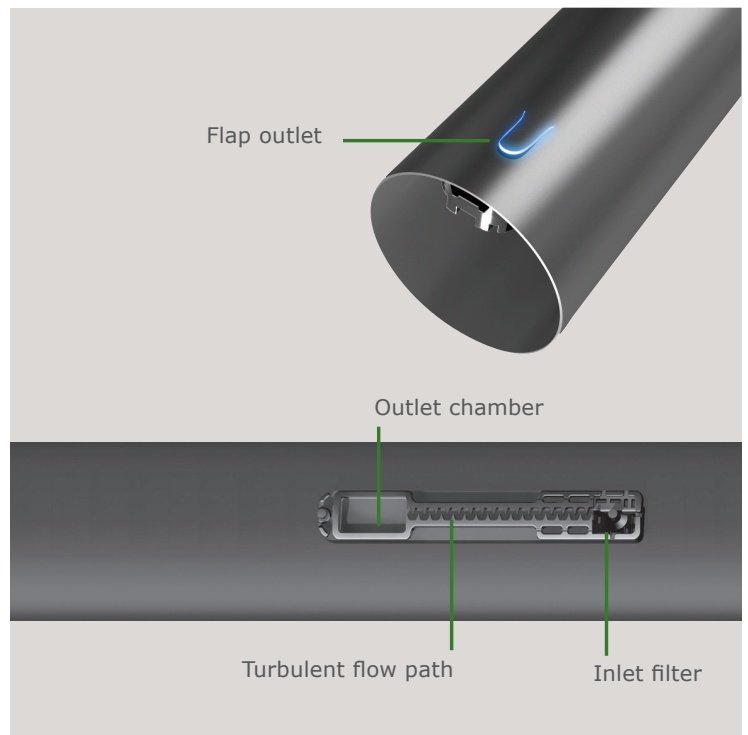
## Flow Rate by Pressure - Hydrodrip Drip Tape



The Hydrodrip Drip Tape is made with a injection molded dripper which produces excellent uniformity. Because the Hydrodrip Dripper is flat, it is a good choice for manual or mechanized layout and retrieval. The Hydrodrip drip tape is available in several diameters, wall thicknesses, dripper spacing and flow rates to meet the needs of your crop.

The Hydrodrip Drip Tape is suitable for SDI applications.

## Internal Illustrations





## Hydrodrip Drip Tape - Flow Rate Per dripper

\*at 8 psi

### Product Information

Nominal Flow (lph)	Nominal Flow (gph)*	K (10-15 mil)	X	Pressure (psi)					
				4	6	8	10	12	15
0.8	0.15	0.0559	0.4752	0.11	0.13	0.15	0.17	0.18	0.20
1.2	0.24	0.0872	0.4842	0.17	0.21	0.24	0.27	0.29	0.32
1.6	0.32	0.1196	0.4723	0.23	0.28	0.32	0.35	0.39	0.43

## Hydrodrip Drip Tape - Flow Rate (GPM) Per 100 Ft

\*at 8 psi

### Product Information

Spacing (inch)	Dripper Flow Rate (gph)*	Pressure (psi)					
		4	6	8	10	12	15
8	0.15	0.27	0.33	0.38	0.42	0.46	0.51
	0.24	0.43	0.52	0.60	0.66	0.72	0.81
	0.32	0.57	0.70	0.80	0.89	0.97	1.07
12	0.15	0.18	0.22	0.25	0.28	0.30	0.34
	0.24	0.28	0.35	0.40	0.44	0.48	0.54
	0.32	0.38	0.46	0.53	0.59	0.64	0.72
16	0.15	0.14	0.16	0.19	0.21	0.23	0.25
	0.24	0.21	0.26	0.30	0.33	0.36	0.40
	0.32	0.29	0.35	0.40	0.44	0.48	0.54
20	0.15	0.11	0.13	0.15	0.17	0.18	0.20
	0.24	0.17	0.21	0.24	0.27	0.29	0.32
	0.32	0.23	0.28	0.32	0.35	0.39	0.43



# Hydrodrip Drip Tape

## Hydrodrip - 5/8"

### Product Information

Dia.	Wall	Spacing	Flow Rate	Flow Rate	gph Dripper	Roll length	Item Number
(inch)	(mil)	(inch)	(gpm / 100ft.)	(gpm / 100ft.)	*8 PSI	(ft)	
5/8"	10	8	0.38	22.52	0.15	7218	WT15018
5/8"	10	8	0.60	35.72	0.24	7218	WT15021
5/8"	10	8	0.80	47.85	0.32	7218	WT15025
5/8"	10	12	0.25	15.02	0.15	7218	WT12534
5/8"	10	12	0.40	23.81	0.24	7218	WT15022
5/8"	10	12	0.53	31.90	0.32	7218	WT15026
5/8"	10	16	0.19	11.26	0.15	7218	WT15019
5/8"	10	16	0.30	17.86	0.24	7218	WT15023
5/8"	10	16	0.40	23.93	0.32	7218	WT15027
5/8"	10	20	0.15	9.01	0.15	7218	WT15020
5/8"	10	20	0.24	14.29	0.24	7218	WT15024
5/8"	10	20	0.32	19.14	0.32	7218	WT15028
5/8"	12	8	0.38	22.52	0.15	5249	WT15029
5/8"	12	8	0.60	35.72	0.24	5249	WT15031
5/8"	12	8	0.80	47.85	0.32	5249	WT15035
5/8"	12	12	0.25	15.02	0.15	5249	WT12535
5/8"	12	12	0.40	23.81	0.24	5249	WT15032
5/8"	12	12	0.53	31.90	0.32	5249	WT15036
5/8"	12	16	0.19	11.26	0.15	5249	WT12536
5/8"	12	16	0.30	17.86	0.24	5249	WT15033
5/8"	12	16	0.40	23.93	0.32	5249	WT15037
5/8"	12	20	0.15	9.01	0.15	5249	WT15030
5/8"	12	20	0.24	14.29	0.24	5249	WT15034
5/8"	12	20	0.32	19.14	0.32	5249	WT15038
5/8"	15	8	0.38	22.52	0.15	4265	WT15039
5/8"	15	8	0.60	35.72	0.24	4265	WT15041
5/8"	15	8	0.80	47.85	0.32	4265	WT15044
5/8"	15	12	0.25	15.02	0.15	4265	WT12537
5/8"	15	12	0.40	23.81	0.24	4265	WT15042
5/8"	15	12	0.53	31.90	0.32	4265	WT15045
5/8"	15	16	0.19	11.26	0.15	4265	WT15040
5/8"	15	16	0.30	17.86	0.24	4265	WT12539
5/8"	15	16	0.40	23.93	0.32	4265	WT15046
5/8"	15	20	0.15	9.01	0.15	4265	WT12538
5/8"	15	20	0.24	14.29	0.24	4265	WT15043
5/8"	15	20	0.32	19.14	0.32	4265	WT15047

## Hydrodrip - 7/8"

### Product Information

Dia.	Wall	Spacing	Flow Rate	Flow Rate	gph Dripper	Roll length	Item Number
(inch)	(mil)	(inch)	(gpm / 100ft.)	(gpm / 100ft.)	*8 PSI	(ft)	
7/8"	10	8	0.38	22.52	0.15	4921	WT15048
7/8"	10	8	0.60	35.72	0.24	4921	WT15051
7/8"	10	8	0.80	47.85	0.32	4921	WT15055
7/8"	10	12	0.25	15.02	0.15	4921	WT11911
7/8"	10	12	0.40	23.81	0.24	4921	WT15052
7/8"	10	12	0.53	31.90	0.32	4921	WT15056
7/8"	10	16	0.19	11.26	0.15	4921	WT15049
7/8"	10	16	0.30	17.86	0.24	4921	WT15053
7/8"	10	16	0.40	23.93	0.32	4921	WT15057
7/8"	10	20	0.15	9.01	0.15	4921	WT15050
7/8"	10	20	0.24	14.29	0.24	4921	WT15054
7/8"	10	20	0.32	19.14	0.32	4921	WT15058
7/8"	12	8	0.38	22.52	0.15	3937	WT15059
7/8"	12	8	0.60	35.72	0.24	3937	WT15061
7/8"	12	8	0.80	47.85	0.32	3937	WT15065
7/8"	12	12	0.25	15.02	0.15	3937	WT11912
7/8"	12	12	0.40	23.81	0.24	3937	WT15062
7/8"	12	12	0.53	31.90	0.32	3937	WT15066
7/8"	12	16	0.19	11.26	0.15	3937	WT11913
7/8"	12	16	0.30	17.86	0.24	3937	WT15063
7/8"	12	16	0.40	23.93	0.32	3937	WT15067
7/8"	12	20	0.15	9.01	0.15	3937	WT15060
7/8"	12	20	0.24	14.29	0.24	3937	WT15064
7/8"	12	20	0.32	19.14	0.32	3937	WT15068
7/8"	15	8	0.38	22.52	0.15	3281	WT15069
7/8"	15	8	0.60	35.72	0.24	3281	WT15070
7/8"	15	8	0.80	47.85	0.32	3281	WT15073
7/8"	15	12	0.25	15.02	0.15	3281	WT11914
7/8"	15	12	0.40	23.81	0.24	3281	WT15071
7/8"	15	12	0.53	31.90	0.32	3281	WT15074
7/8"	15	16	0.19	11.26	0.15	3281	WT12579
7/8"	15	16	0.30	17.86	0.24	3281	WT11916
7/8"	15	16	0.40	23.93	0.32	3281	WT15075
7/8"	15	20	0.15	9.01	0.15	3281	WT11915
7/8"	15	20	0.24	14.29	0.24	3281	WT15072
7/8"	15	20	0.32	19.14	0.32	3281	WT15076